



Spring 2 - 2024

Newsletter

We are halfway through the school year! January and February were very busy months at school, and our first half term is over already - what a quick 5 weeks. This half term is equally short in length. We will break for Easter on Friday 22nd March.

It has been lovely seeing our families during the first half term at our 'learn with me sessions' and class assemblies. We are aiming to do more of these over the coming months.

We will continue monitor attendance this term. Remember every day that your child misses impacts on their education. If you are keeping your child home, please contact us at the school office. Fixed Penalty Notices are now being issued for holidays absences over 10 days.

#MISS SCHOOL MISS OUT

Start and End Times

Foundation Phase

9.00 - 3.20

Nursery - Collect from class

Foundation Phase - Collect on School Yard

KS2

9.00 - 3.30

Junior Children - Collect at the walking gate



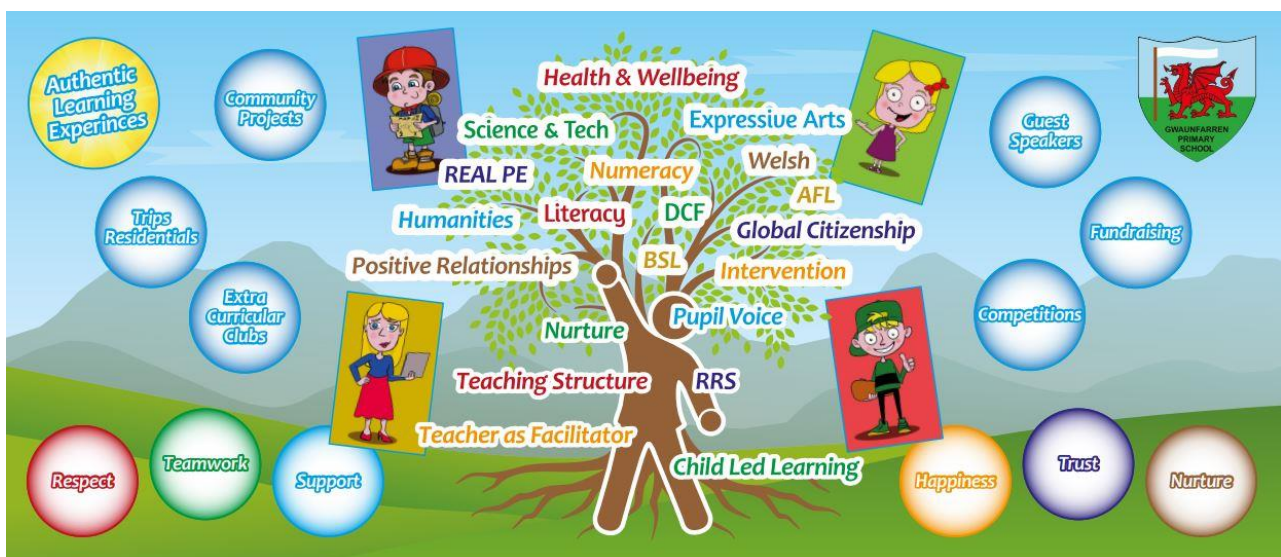
Important Email Addresses

School Office

office@gwaunfarren.merthyr.sch.uk

Mr Lewis





head@gwaunfarren.merthyr.sch.uk



Gwaunfarren Primary School



SCHOOL DEVELOPMENT TARGETS 2023/4

Target 1	Target 2	Target 3	Target 4
<p>To plan and embed a broad and purposeful curriculum that meets the requirements of the New Curriculum for Wales, focusing on the progression for all learners</p> 	<p>To continue to improve standards and provision in Literacy, Numeracy, Welsh and the DCF to enable effective progress of all learners.</p> 	<p>To develop a more strategic approach to professional learning that focuses on securing high quality teaching and assessment that helps pupils to improve.</p> 	<p>To develop as a Community Focused School – working with all stakeholders.</p> 



Welsh Costumes



We are creating a Welsh costume 'Swap Shop'

If you have any unwanted/ outgrown or spare costumes, please drop them to the office so we can organise them.

Once our shop is up and running - please take anything you need and replace what you can.



Diolch.



teachers2parents



Please keep up to date with our social media posts...



Twitter - @GwaunfarrenSch

Facebook - Gwaunfarren Primary School

Parent Pay - Please download the Parent Pay app - you will need to book your child's lunch on this even if they are Free School Meals

Website - <https://www.gwaunfarrenprimaryschool.co.uk/>

Text Messages - Please ensure we have your correct contact details at the office, as we send regular messages

We need your help!



If you have any unwanted, preloved board games/ jigsaws that your children no longer use, please could you donate them to school.

We want to help our children communicate better, enhance their social skills and develop the important life skill of winning and losing.

There are many benefits of board gaming for children such as enhancing social skills, boosting their self-esteem, developing fine motor skills and hand-eye coordination, teaching number, shape, colour and word recognition, and encouraging flexible thinking.

If you are able to donate, please leave them at the school office.

Diolch



Penydre Cluster Eisteddfod



On Wednesday 31st January over 30 of our pupils represented the Penydre Cluster Eisteddfod. The children took part in a range of events including poetry recitations, singing, dancing and art competition. Every pupil who took part were placed. All pupils were fantastically behaved and great ambassadors for our school. We are extremely proud of our pupils and their efforts. Overall we came 2nd. All children who were winners will now represent the cluster at the Merthyr Noson Llawen in March.



School Parking

When parking around our school site, please respect our local residents and other road users. Please do not park in front of driveways, over dropped kerbs or on pavements.

It is important that areas surrounding our school are safe for our pupils when entering and leaving school.

Food and Fun

We will be running the Food and Fun program again during the school summer holidays. The program will run for the first 12 days of the summer holidays, for children in reception to year 5.

The program will allow the children to try a number of foods and take part in numerous physical activity sessions.

If you would like to sign your child up, please complete the form below. There is no cost for the program.

<https://forms.office.com/r/VyZqfmz6hN>

What is Food and Fun?

Food and Fun is a school-based education programme that provides food and nutrition education, physical activity, enrichment sessions and healthy meals to children during the school summer holidays.

Starting as a pilot run by Cardiff Council in 2015, Food and Fun has developed into a national, fully funded Welsh Government programme administered by the Welsh Local Government Association (WLGA). In 2021, 157 schools delivered the programme and provided over 7500 places for children each day that it ran.

The Welsh Government has committed to fund SHEP in 2022 with £4.85m allocated in the budget. The WLGA will continue to coordinate the roll-out by working closely with local authorities and partner agencies.

What are the main benefits of Food and Fun?

- 1 The schemes encourage children to be more active over the summer
- 2 Improvements in children's diets
- 3 Making new friends and having fun
- 4 Learning and engagement with school
- 5 Improving parents' health and well-being
- 6 Parents learn new skills
- 7 Involves the whole family
- 8 Facilitates collaboration between agencies
- 9 Makes better use of existing facilities
- 10 Encourages community engagement
- 11 Offers paid and voluntary employment
- 12 Signposts to other services
- 13 Helps parents meet the costs of school holidays

What are Food and Fun's intended outcomes?

- Improved mental health and emotional well-being
- School engagement and educational attainment
- Improved aspirations
- Improved physical activity
- Improved dietary behaviour.

Working together to promote healthy living, positive well-being and improve engagement with education and the school during the summer holidays.

For more information contact:

Janine Brill
Janine.Brill@wales.nhs.uk
Mobile : 07890896679

“I really enjoyed my time at Food and Fun. It has kept me busy and less bored, only wish it lasted longer.”

“An excellent service and a great help over the holidays. Gets the kids out of the house and active and learning about healthy foods.”

“My child has had a lot of fun at Food and Fun and spending time hanging out with her friends instead of being at home on her tablet or phone.”

CLLGC WLGA

New Playground Equipment

The children requested that we make playtimes more interesting and exciting. We listened and through pupil voice the children chose the new equipment for the school yard. The children took part in a whole school vote and chose the winning structure. The structure is now in place. The children will be supervised when using these in school. Please do not allow your children to play on them at the end of the day.



Universal Primary Free School Meals (UPFSM) – Year 5 & 6 Pupils

From February 19th 2024, UPFSM (Universal Primary Free School Meals) will be available to all pupils in Years 5 and 6 completing the roll out to all primary aged pupils from Full time Nursery to Year 6.

In order to provide a smooth running of the service and to be able to provide lunches to those that have any special dietary requirements, this includes vegetarian preferences as well as ethical / religious diets, in addition to medical/allergen needs, you are required to fill in a Special Dietary Form and upload relevant documentation supporting any allergy / prescribed diet.

The form can be found using the link below:

<https://www.merthyr.gov.uk/do-it-online/request-or-apply/special-dietary-requirements-form/?lang=en-GB&>

It is imperative that this form is completed if your child has a special dietary requirement so that we can provide an appropriate menu.

All parents are encouraged to pre-book their children's meal(s) in advance via ParentPay.

Free School Meals / Schools Essential Grant

Although universal entitlement to free school meals is being rolled out to all pupils in Primary school, the Welsh Government still require eligible families to apply for 'free school meal' status. Applying for 'free school meal' status will provide you with Schools Essential Grant of £125 per eligible child, which can be used on school uniform, PE equipment and IT for your child.

The Gwaunfarren Guarantee - Gwarant Gwaunfarren



Gwarant Gwaunfarren

Our school is a safe place.

We are inclusive.

We are nurturing.

Everyone is respected.

Our learning environments are calm and pupil friendly.

We have high expectations of our pupils and staff.

Lessons will be fun and engaging.

We will promote the Welsh language.

Learning opportunities will meet the needs of **all** pupils.

We will challenge our pupils.

Feedback will be used to improve learning.

Our curriculum will develop independence, thinking skills and allow learners to gain knowledge.

Our curriculum will be purposeful, whilst our pupils will experience authentic learning experiences.

Our pupils will gain the skills to ensure they are lifelong learners and ready for the future!

Our Spring Term Theme - Magical Mabi

Our whole school theme this term is 'Magical Mabi'. The rationale for focusing on 'The Mabinogion' is to allow learners to better appreciate the land that they call 'home'. The tales are deep rooted in Welsh folklore and reflect the rich, cultural history of Wales, evoking a sense of 'hiraeth', unique only to Welsh people. Further significance to the topic derives from Lady Charlotte Guest, a prominent figure who resided in our immediate locality in the 19th century. Lady Charlotte played a significant role in preserving and popularising the Mabi tales, rewriting them into the versions we see today. Exploring the tales through the lens of expressive arts allows learners to engage with the stories, characters, and themes while developing their artistic skills and understanding of Welsh heritage. This topic provides learners with an opportunity to not only learn of the wonders that once roamed their enchanted land, but to better connect with their cultural tapestry and spectacular landscape, ultimately enhancing

their sense of 'Cynefin'. The integration of expressive arts into a topic centered around the Mabinogion tales and Welsh identity strongly aligns with pedagogy outlined in Curriculum for Wales, and provides learners with a meaningful and culturally significant educational experience.

Key Dates

23.2.2024	-	Feel Good Friday
1.3.2024	-	School Eisteddfod (Welsh Costumes)
7.3.2024	-	World Book Day (Dress as your favourite character)
15.3.2024	-	Red Nose Day (Wear Red)
13 th - 15 th March	-	Year 6 Residential
21.3.2024	-	Noson Llawen
19 th and 20 th March	-	Parent Teacher Meetings
22.3.2024	-	Last Day of Term
8.4.2024	-	Children return to School
18.4.2024	-	Autism Awareness Day (Wear Blue)